

# **INTELLITRAC X8**

## **GPRS DIAL UP SETTING**



## **INDEX**

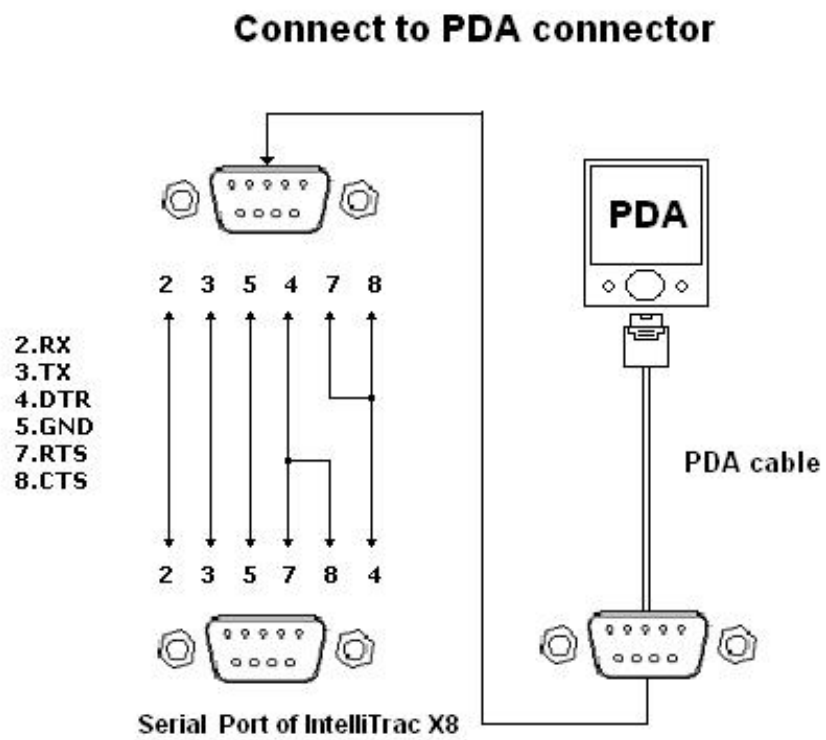
---

<b>1.</b>	<b>HARDWARE REQUIREMENT:.....</b>	<b>2</b>
<b>2.</b>	<b>MAKING CONNECTION:.....</b>	<b>4</b>

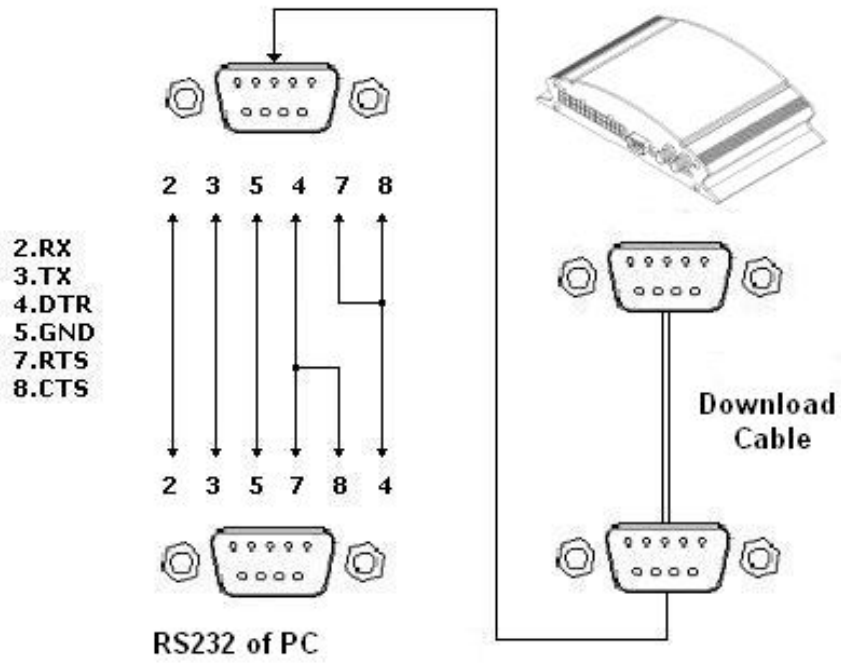
## 1. HARDWARE REQUIREMENT:

---

- **IntelliTrac X8 Unit (Firmware Version 1.304 or above)**
- PC/PDA (Operating System : Windows 98/2K/XP/CE)
- A SIM Card with GPRS function enabled.
- Data Transmitting Cable, please refer to following figures:



## Connect to PC

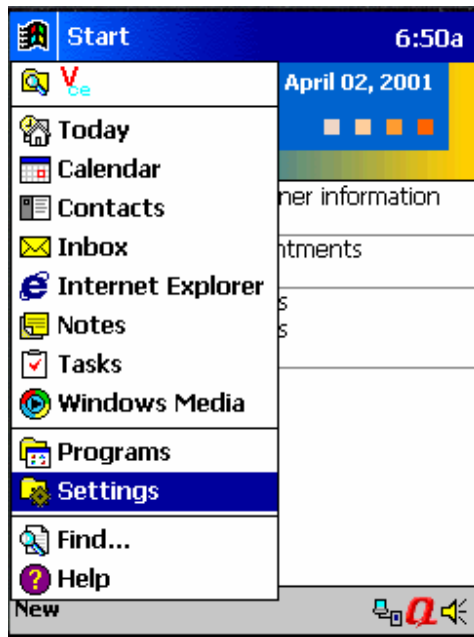


## 2. MAKING CONNECTION:

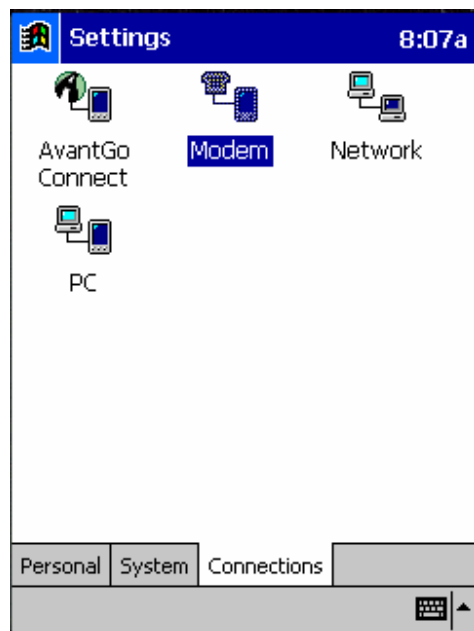
---

- For Windows CE operating system, please follow steps below:

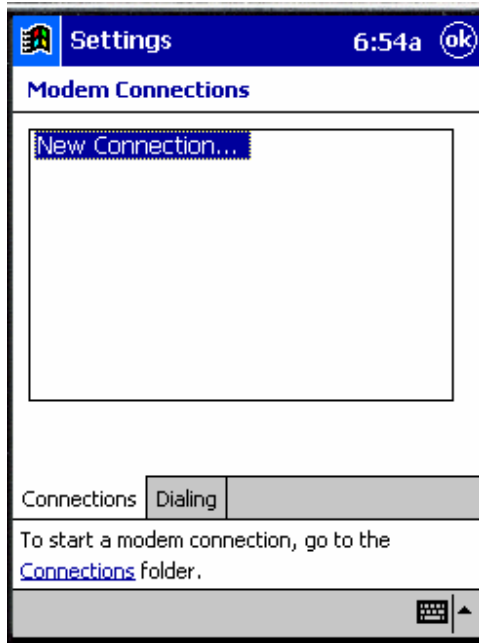
1. Click “**Start**” drop-down menu and select “**Settings**”



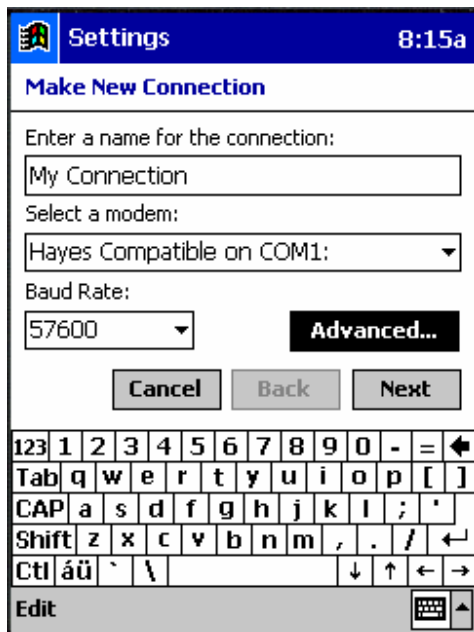
2. Click “**Connections**” tab and click “**Modem**”:



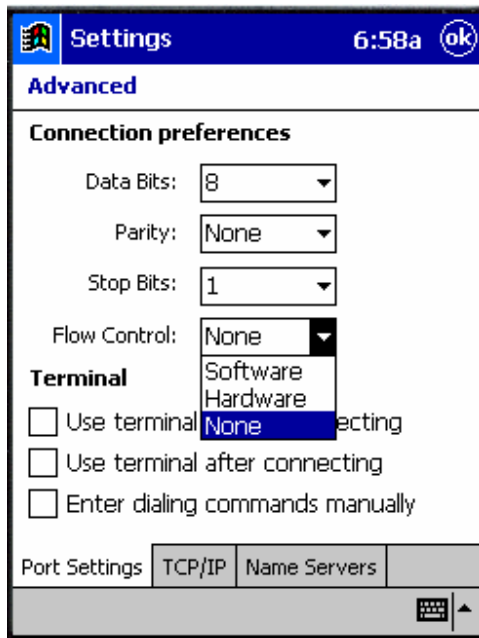
3. Click “**New Connection**”



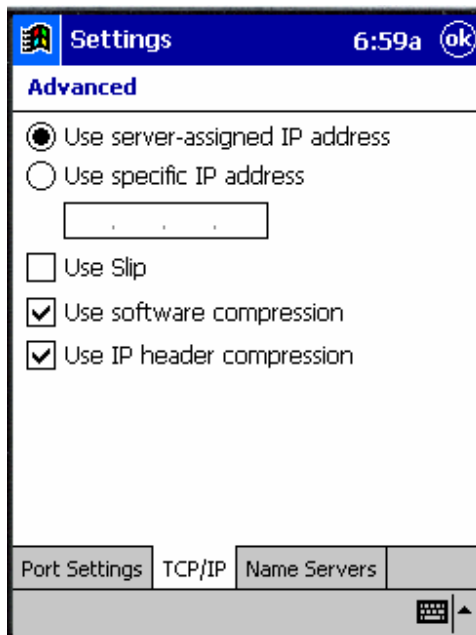
4. Please select “**Hayes Compatible on COM1**” and set “Baud rate” to **57600** bps then click “**Advanced**” tab.



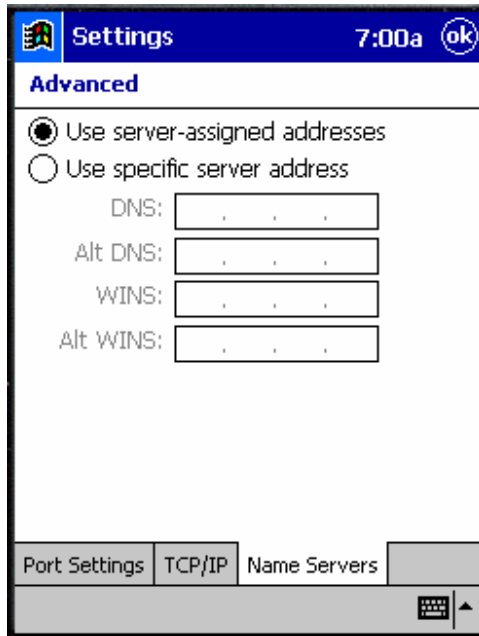
5. Set “**Flow Control**” to “**None**”:



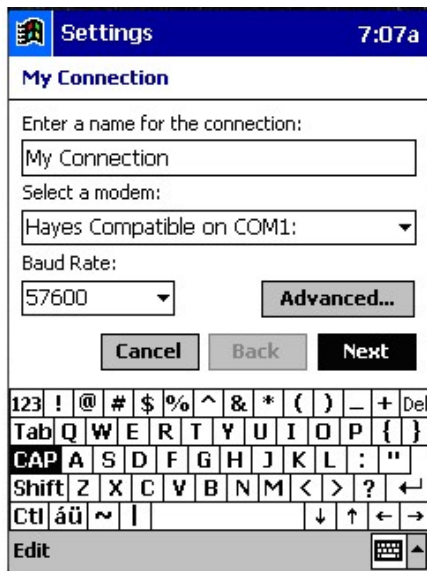
6. Click “**TCP/IP**” tab and select “**Use software compress**” and “**Use IP header compression**”



7. Click “**Name Servers**” and check “**Use server-assigned address**” and click  :



6. Click “**Next**”:



7. Enter “\*99\*\*\*1#” in the “Phone number” section and click “Next” button

Settings 7:03a

My Connection

Country code: 1

Area code: 425

Phone number: \*99\*\*\*1#

Cancel Back Next

123 ! @ # \$ % ^ & \* ( ) \_ + Del  
Tab Q W E R T Y U I O P { }  
CAP A S D F G H J K L : "  
Shift Z X C V B N M < > ? ←  
Ctl á ü ~ | ↓ ↑ ← →  
Edit

9. Click “Finish” button:

Settings 7:27a

My Connection

Cancel call if not connected within  
120 seconds

Wait for dial tone before dialing

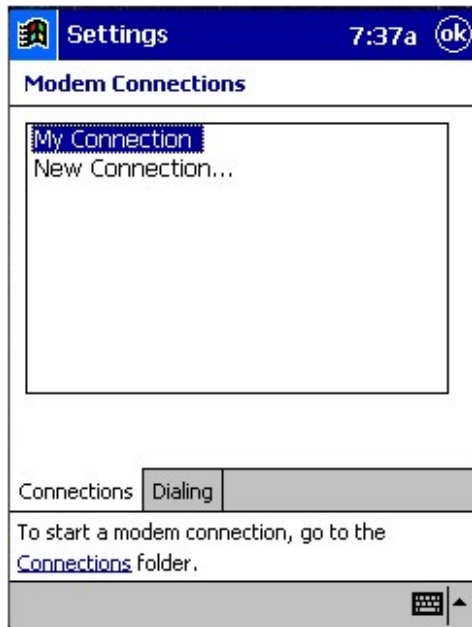
Wait for credit card tone 0 seconds

Extra dial-string modem commands:

Cancel Back Finish

Edit

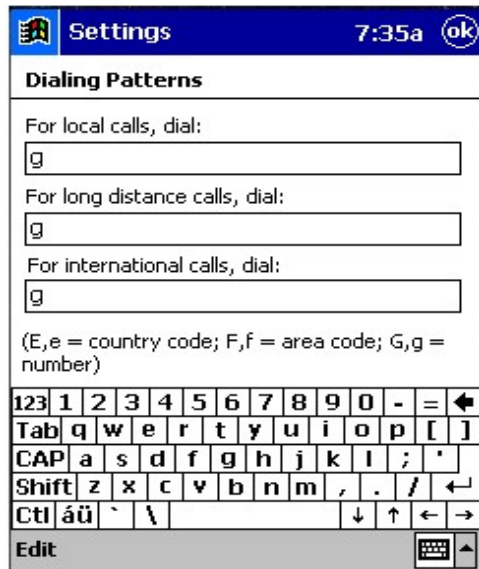
10. Click “**Dialing**” button:



11. Click “**Dialing Patterns**” tab,



12. Please enter letter “g” for each column as following and Click  button:



13. Click “**Connections**” tab:



14. Click “My connection”



15. Click “Connect...” to go online by using GPRS transparent mode of IntelliTrac X8 GSM modem.

